

GB 1. Intended use / Indication

US Light-curable polymerizable resin intended to be used in conjunction with extra-oral curing light equipment for the fabrication, by additive manufacturing, of dental appliances. Indicated for the production of dental models.

2. Contraindication

ACRY Smile 3D RU-002 Model is contraindicated for any use on patients (**ACRY Smile 3D RU-002 Model** is only a laboratory product).

3. Intended Users

Dentist, dental technicians

4. Requirements

Software - information available from:

exocad GmbH • Julius-Reiber-Straße 37, 64293 Darmstadt, Germany

Hardware (3D Printing) - information available from:

ASIGA • 2/19-21 Bourke Road, Alexandria, NSW 2015, Australia

Hardware (Post Curing) - information available from:

pro3dure medical (CD-1, CD-2) • Am Burgberg 13, D-58642 Iserlohn, Germany

Additional specifications on www.pro3dure.com.

5. Material

ACRY Smile 3D RU-002 Model consists of functional (meth)acrylic resins, initiators, dyes and stabilisers.

6. Geometric presetting

According to the design specifications of the applicable CAD software.

7. Material parameters

Radiation penetration depth controllable by exposure time:
50 µm
100 µm

* These data come from measurements of a representative sample that was determined as part of our quality assurance. / * Diese Daten stammen aus Messungen einer repräsentativen Probe, die im Rahmen unserer Qualitätssicherung ermittelt wurden. / * Ces données proviennent des mesures d'un représentant échantillon qui a été déterminé dans le cadre de notre assurance qualité. / * Estos datos provienen de mediciones de una representante muestra que se determinó como parte de nuestra garantía de calidad. / * Questi dati provengono dalle misurazioni di un rappresentante campione che è stato determinato nell'ambito della nostra garanzia di qualità.
** According to internal design and requirements specifications / ** Gemäß internen Design- und Anforderungsspezifikationen / ** Selon la conception interne et les spécifications des exigences / ** Según especificaciones de diseño y requisitos internos / ** Secondo la progettazione interna e le specifiche dei requisiti

8. Manufacturing process (fig. 1-10)

1. Prepare data (CAD & build preparation).
2. Choose process parameters (build style, etc.).
3. Transfer prepared data to 3D printing device.
4. Prepare 3D printing – shake bottle.
5. Fill resin tank of 3D printing device.
6. Build the parts.
7. Clean parts (with IPA > 97 % or equivalent cleaning agent) approx. 4 min. in an ultrasonic bath or equivalent device – precleaning recommended.
8. Dry parts, until there are no residues of IPA or equivalent cleaning agent.
9. Post curing (4 min.): inert atmosphere recommended (use adequate light curing device).
10. Finish parts.

9. Finishing processes

According to the further uses (e.g. insulating, blocking out, etc.).

10. Notice

Please follow the instructions provided by the software manufacturer in terms of parameter settings and design recommendations. Please follow the instructions provided by the hardware manufacturer in terms of parameter settings/printing & post curing recommendations. To avoid detrimental effects on material quality do not expose the liquid material to irradiation under any circumstances. Deviations from the described manufacturing processes or storing conditions may lead to different mechanical and optical properties of the material.

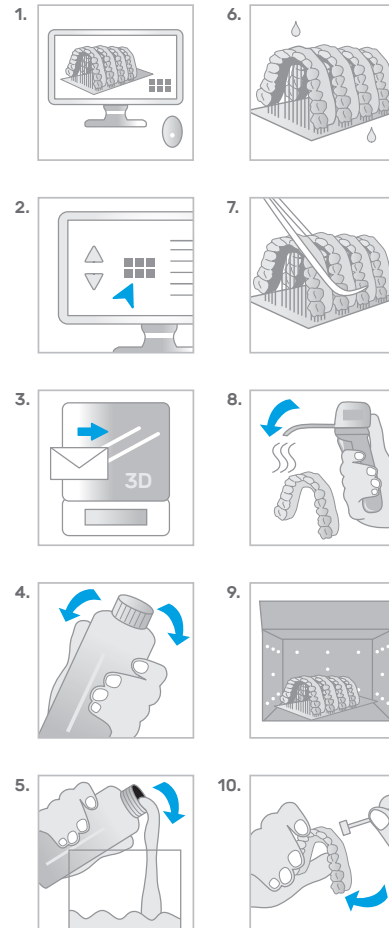
Caution: The lot number and the best before date are indicated on each packaging. In case of claims please always indicate the lot number of the product. Do not use the product after expiry of the best before date. Avoid breathing dust/fume/gas/mist/vapours/spray. Wash hands thoroughly after handling. Use only outdoors or in a well-ventilated area. Contaminated work clothing should not be allowed out of the workplace. Wear protective gloves/protective clothing/eye protection/face protection. IF ON SKIN: Wash with plenty of soap and water. IF INHALED: Remove person to fresh air and keep comfortable for breathing. IF IN EYES: Rinse cautiously with water for several minutes. Remove contact lenses, if present and easy to do. Continue rinsing. Call a POISON CENTER or doctor/physician if you feel unwell. Specific treatment (see information on this label). If skin irritation or rash occurs: Get medical advice/attention. If eye irritation persists: Get medical advice/attention. Take off contaminated clothing. Store in a well-ventilated place. Keep container tightly closed. Store locked up. Dispose of contents/container according to official regulations.

11. Hazard statements

Causes skin irritation. May cause an allergic skin reaction. Causes serious eye irritation. May cause respiratory irritation.

RU-002 Model

Instructions for use
Gebrauchsanweisung
Mode d'emploi • Instrucciones de uso
Istruzioni per l'uso
Instruções de utilização



Physical properties* /
Physikalische Eigenschaften* /
Propriétés physiques* /
Propiedades físicas* /
Proprietà fisiche* /
Propriedades físicas*:

Ordering information/
Bestellinformationen/
Informations de commande /
Información sobre pedidos /
Informazioni sull'ordine /
Informações para encomendas:

ACRY Smile 3D RU-002 Model

ACRY Smile 3D RU-002 Model

■ Flexural stress /
Biegespannung /
Contrainte de flexion /
Tensión de flexión /
Sollecitazione a flessione /
Tensão de flexão
MPa (ISO 178): ≥ 80

1 kg:
λ ≤ 405 nm

■ Bending module /
Biegemodul /
Module de pliage /
Módulo de flexión /
Modulo di piegatura /
Módulo de flexão
MPa (ISO 178)**: ≥ 1600

**grey /
grau /
gris /
gris /
grigio /
cinza**
REF: 0220002

■ Flexural strain (at break) /
Biegedehnung (bei Bruch) /
Déformation en flexion (à la rupture) /
deformación en flexión (a la rotura) /
deformazione a flessione (a rottura) /
Tensão de flexão (na rutura)
MPa (ISO 178)**: 10 %

■ Shore hardness D /
Shore-Härte D /
Dureté Shore D /
Durezza Shore D /
Durezza Shore D /
Durezza Shore D (DIN 48-4)**: 80

■ Viscosity / Viskosität /
Viscosité / Viscosidad /
Viscosità / Viscosidade
Pas (23 °C)
(DIN 53019-1): 1

Manufacturer:
pro3dure medical GmbH
Am Burgberg 13
D-58642 Iserlohn
Phone: +49 (0)2374 920050-0
info@pro3dure.com
www.pro3dure.com

Made in Germany

This side up. Diese Seite nach oben. Ce côté vers le haut. Este lado hacia arriba. Questo lato in su. Este lado para cima.	Temperature limit Temperaturgrenze Limite de température Limite de temperatura Limite di temperature Limite de temperatura	Warning Achtung Attention Atención Attenzione Atenção	Do not use if package is damaged. Nicht verwenden, wenn das Paket beschädigt ist. Ne pas utiliser si l'emballage est endommagé. No lo use si el paquete está dañado. Non usare se il pacchetto è danneggiato. Não utilizar se a embalagem estiver danificada.	Consult instructions for use Gebrauchsanweisung beachten. Consulter le mode d'emploi. Consultar instrucciones de uso. Consultare le istruzioni per l'uso. Consultar as instruções de utilização.	Keep away from sunlight. Haltbarkeitsdatum Vermeiden Sie Sonnenlicht. Éloigner du soleil. Manter afastado da luz solar. Tenere lontano dalla luce del sole. Manter afastado da luz solar.	Rx only QTY: 1EA	Use by date Haltbarkeitsdatum Utiliser par date Utilizar por fecha Usare entro la data Data limite de utilização	Catalogue number Katalognummer Número de catalogue Número de catálogo Número de catálogo	Lot number Chargennummer Número de lot Número de lote Número de lote	Date of manufacture Herstellungsdatum Date de fabrication Fecha de manufactura Data di produzione Data de fabrico

Ruthinium®
WE TAKE CARE OF YOUR SMILE

**Ruthinium®
Dental Manufacturing S.p.A.**
Via Cà Mignola Nuova, 1699
45021 Badia Polesine (RO) ITALY
Phone +39 0425 51628 - Fax +39 0425 590156
info@ruthinium.it - www.ruthinium.it

