

AcryCette

Beauty & Simplicity



AcryCette



Beauty & Simplicity

Applications

AcryCette is the system of acrylic resin facings that is ideal for restorations of temporary removable and fixed dentures thanks to its aesthetic appeal, convenience of use and versatility.

Removable dentures:

- Dentures on implants and bars
- Hybrid dentures
- Toronto Bridges
- Telescopic restorations
- Bridges and bars with CAD/CAM drills
- Cast partial dentures

Fixed dentures:

- Creation of aesthetic temporaries
- Transformation into lithium disilicate
- Temporaries for immediate loading
- Implant-supported restorations

Material

The use of high molecular weight PMMA resin guarantees AcryCette a high resistance to abrasion. The resin's special formula makes AcryCette burn out completely without trace, allowing a quick and easy transformation of the temporary restoration into lithium disilicate.

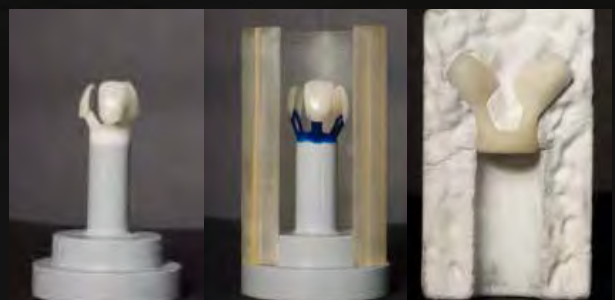
AcryCette can be personalised with great simplicity through a silanisation procedure.



Personalisation

Benefits

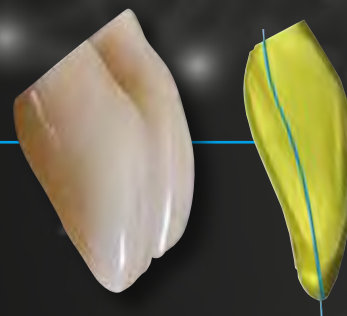
- Ease of use
- Rapidity of execution of the restorations
- Natural aesthetics
- Elevated resistance to abrasion
- Transformable into lithium disilicate
- Perfect for scanning by shape, texture and occlusal anatomy
- Customisable



Transformation into lithium disilicate

Anteriors | Characteristics

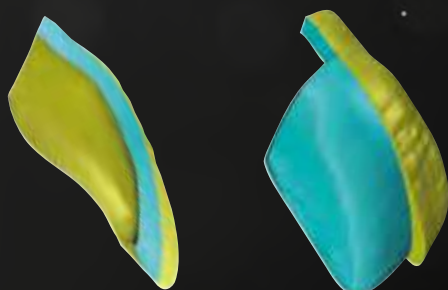
Two-layer anteriors characterised by wide interproximal areas that create a special kind of light diffraction, producing greater aesthetic results. The particular wrap-around shape of the interproximal areas makes it possible to hide the junction point with the Acry C&B resin used for the temporary. The natural effect is completed by the pleasant and harmonious vestibular texture.



Wide interproximal areas



Vestibular texture



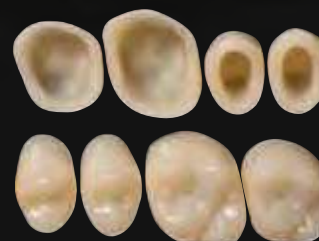
Stratification

Posteriors | Characteristics

The configuration of the developmental grooves of the posterior crowns produce a greater grinding efficiency that is maintained over time, even when there is cusp wear.

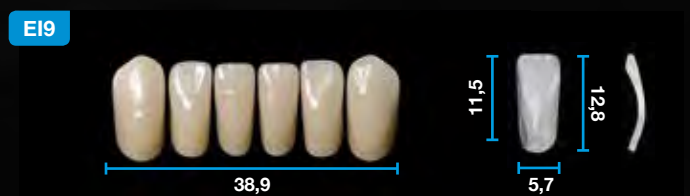
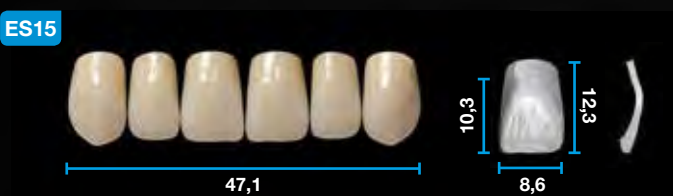
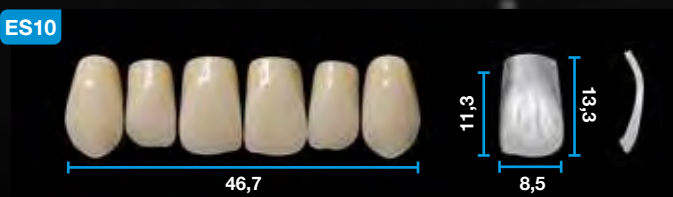
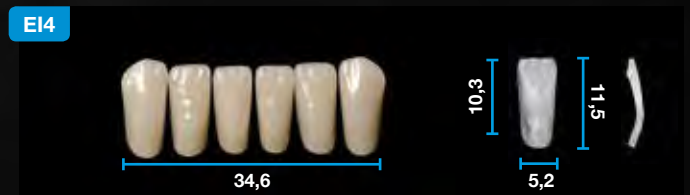
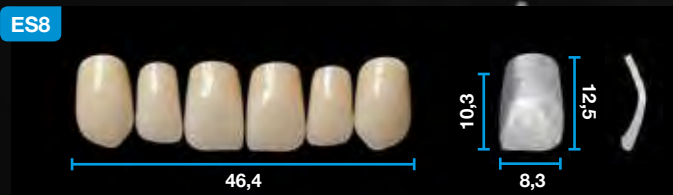
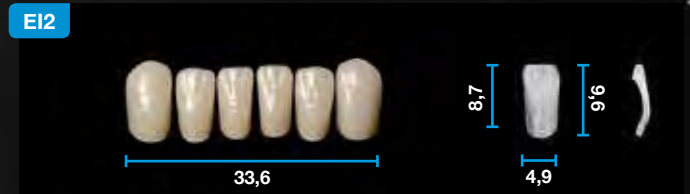


Cusp angle 35°



The presence of palatal and lingual walls in the crowns allows for a quick and easy fitting, as well as the creation of immediate load temporaries.

Table of shapes | Anteriors



Articulation table*

Anteriors Uppers	Anteriors Lower	Posteriors
ES5	EI4-EI2	TM35
ES8	EI4-EI5	TM35
ES10	EI5-EI9	TM35 - TL35
ES15	EI9	TM35 - TL35
ES17	EI9	TL35
ES18	EI9	TL35

* Combinations are indicative. The type of fitting and the clinical case may require different combinations.

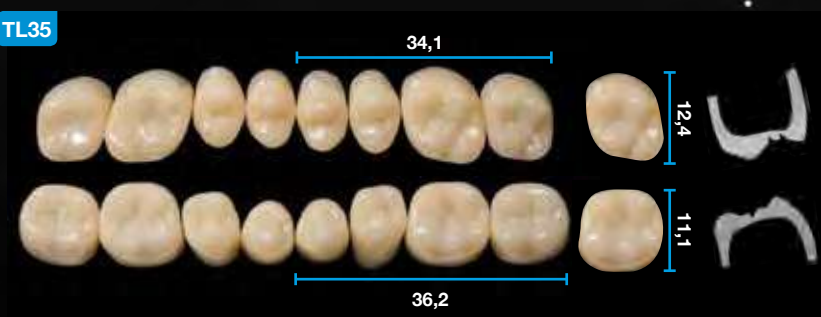
values expressed in millimetres

Table of shapes | Posteriors

TM35



TL35



values expressed in millimetres

CODES AND FORMATS

Product	Code
Acry Cette 6 Upper	0130001
Acry Cette 6 Lower	0130002
Acry Cette 8 Upper	0130003
Acry Cette 8 Lower	0130004
Acry C&B Dentine	40 g 0640001
Acry C&B Dentine	100 g 0640002
Acry C&B Dentine	500 g 0640003
Acry C&B Cervical	40 g 0650001
Acry C&B Cervical	100 g 0650002
Acry C&B Cervical	500 g 0650003
Acry C&B Incisal	40 g 0660001
Acry C&B Incisal	100 g 0660002
Acry C&B Incisal	500 g 0660003
Acry C&B Liquid Self Curing	60 ml 0690005
Acry C&B Liquid Self Curing	250 ml 0690006
Acry C&B Liquid Self Curing	500 ml 0690007
Kera Casting Fast	4.480 g 4150001
Ruthinium Liquid	750 ml 3810001
Ruthinium Liquid	1.000 ml 3850001
Ruthinium Liquid	5.000 ml 3860001

AcryCette range

Anterior facings: 6 upper anterior shapes and 4 lower anterior shapes. Available in the following colours: A2 - A3 - A3,5

Posterior crowns: 2 upper posterior shapes and 2 lower posterior shapes. Available in the following colours: A2 - A3 - A3,5

For the temporary preparation:

Acry C&B

High molecular-weight acrylic resin for:

- temporary works in the laboratory
- long-lasting temporary works
- aesthetic covering on metal crowns and bridges
- repairs

Advantages:

- ease of use
- versatility
- high level aesthetic results
- abrasion and breakage resistant
- low bacterial plaque adhesion
- bio-compatibility



Shades available for dentine, cervical and incisal:

A1 - A2 - A3 - A3,5 - B2 - C1 - C2 - D2 - D3 - Incisal 1 - 1A - 1C - 1D - 1E - 2A - 2B - 4A - 4B - Incisal 2

For transformation into lithium disilicate:

Kera Casting Fast

Phosphate investment for bridges and crowns, pressable ceramic and lithium disilicate.

Use with both rapid and standard methods.

Its characteristic, fine grain and absence of graphite means even the tiniest details are reproduced. Suitable for all types of castings in fixed prostheses.

Packaging: 28 pre-dosed bags of 160g.





FOLLOW US



Dental Manufacturing S.p.A.
Via Ca' Mignola Nuova, 1699
45021 Badia Polesine (RO) - Italy
Tel. +39.0425.51628 - +39.0425.590587
Fax +39.0425.590156
www.ruthinium.it - info@ruthinium.it